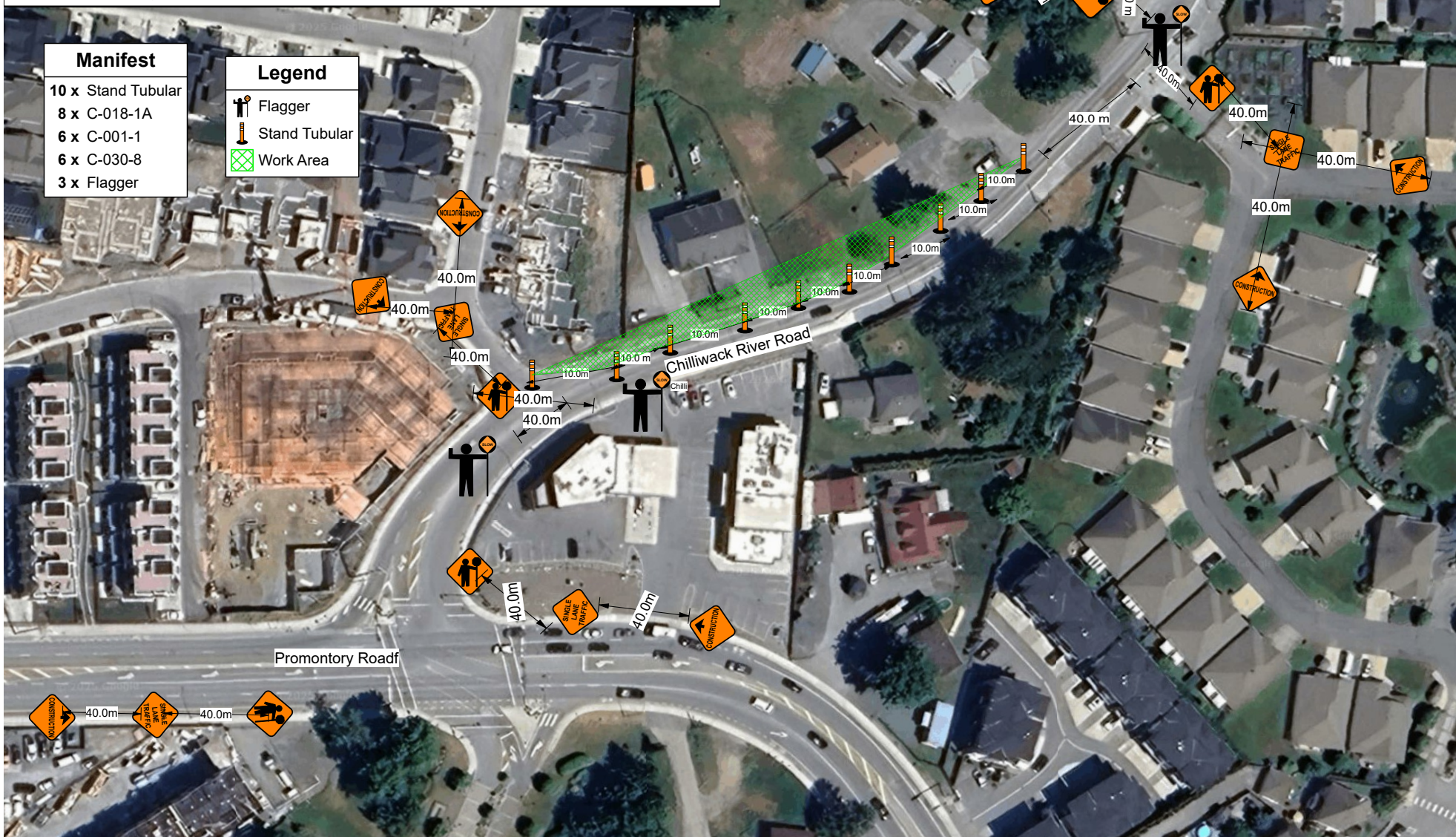


Date: 2025-07-18 Author: Strohmaier Excavating (2019) Ltd. - Project #161 Project: Tzeachten FN - Chilliwack River Road Sidewalk Improvements - Phase 1

Comments:

Phase 1

- Distances as per table A & B section 7 - traffic control layouts as per figure 7.8 traffic control closure with TCP's
- Single lane alternating traffic - short term - with assistance from TCP's
- Driveway access to be maintained
- Pedestrian and Cyclists will be provided safe passage through the construction zone
- TCP's will assist vehicles turning



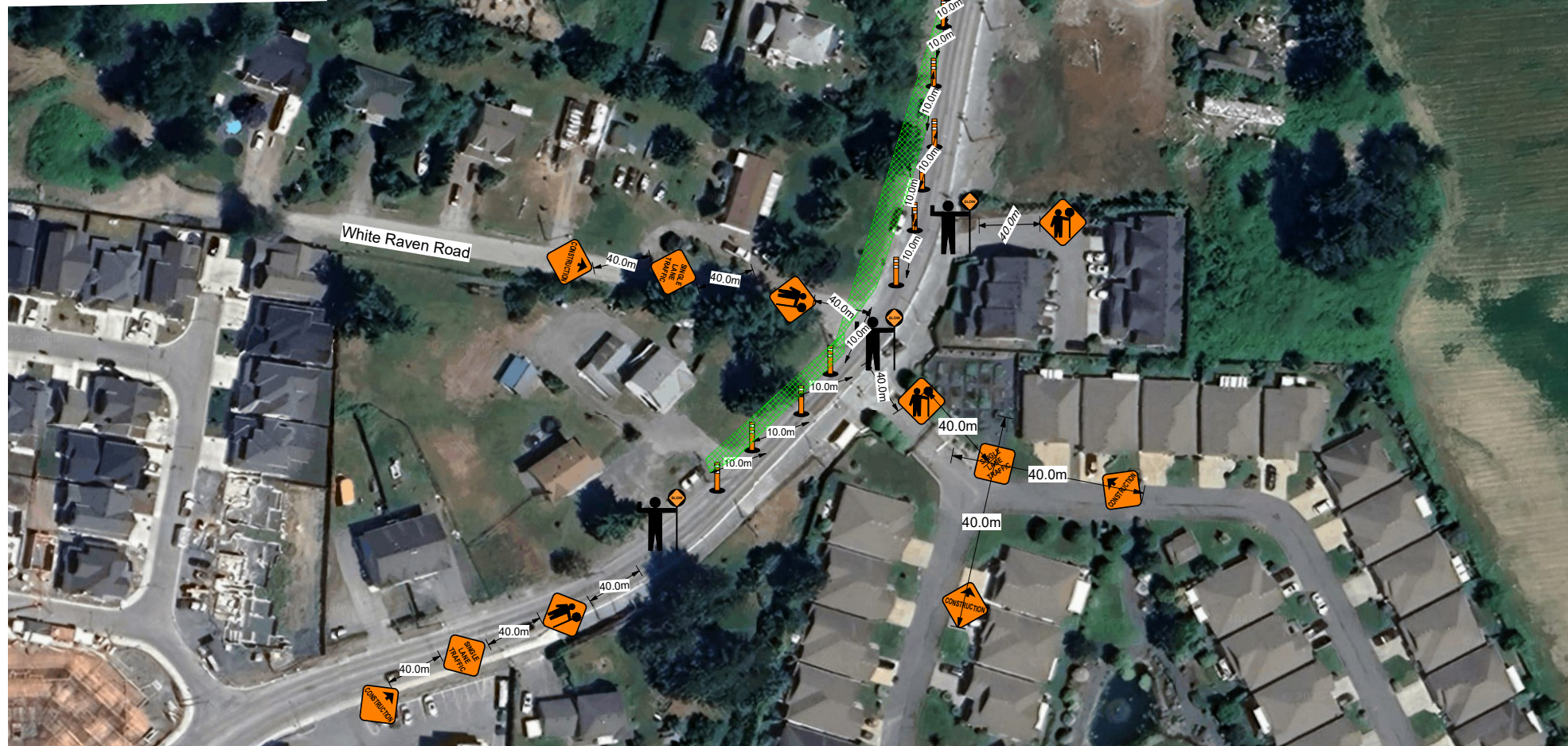
Date: 2025-07-18 Author: Strohmaier Excavating (2019) Ltd. - Project #161 Project: Tzeachten FN - Chilliwack River Road Sidewalk Improvements - Phase 2

Comments:

Phase 2

- Distances as per table A & B section 7 - traffic control layouts as per figure 7.8 traffic control closure with TCP's
- Single lane alternating traffic - short term - with assistance from TCP's
- Driveway access to be maintained
- Pedestrian and Cyclists will be provided safe passage through the construction zone
- TCP's will assist vehicles turning

Manifest	Legend
11 x Stand Tubular	Flagger
7 x C-018-1A	Stand Tubular
5 x C-001-1	Work Area
5 x C-030-8	
4 x Flagger	



Phase 3

- Distances as per table A & B section 7 - traffic control layouts as per figure 7.8 traffic control closure with TCP's
- Single lane alternating traffic - short term - with assistance from TCP's
- Driveway access to be maintained
- Pedestrian and Cyclists will be provided safe passage through the construction zone
- TCP's will assist vehicles turning

Manifest	Legend
12 x Stand Tubular	Flagger
9 x C-001-1	Stand Tubular
8 x C-018-1A	Work Area
8 x C-030-8	
5 x Flagger	

